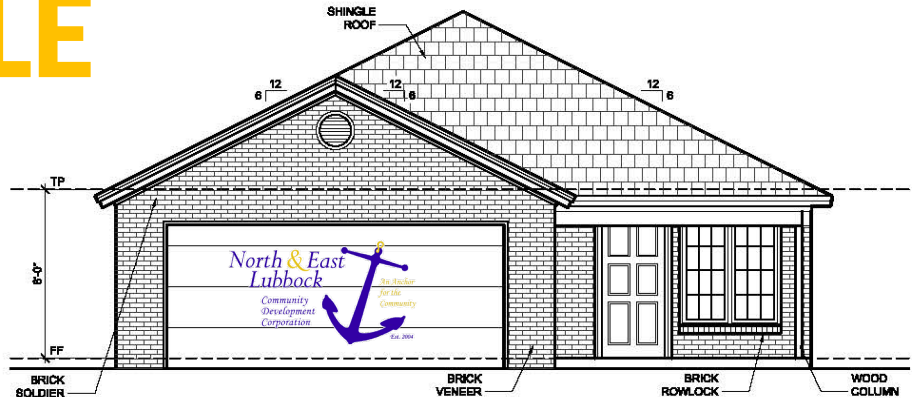




AFFORDABLE HOUSING AVAILABLE



King's Dominion Affordable Housing Project

Program Criteria

- ✓ Buyer Income must be 65%-80% of AMI
- ✓ Must be a first-time homebuyer
- ✓ Must complete the NELCDC financial literacy and homebuyer education workshop
- ✓ Must be an NELCDC housing counseling client (one-on-one/face-to-face counseling session participant)
- ✓ Must purchase a home built by the NELCDC in King's Dominion in 2019 for the purposes of furthering affordable housing in north & east Lubbock
- ✓ Tax Returns & W-2s must be provided with application to determine eligibility
- ✓ **If all criteria are met, may be eligible for up to \$4,000 in down payment and closing cost assistance (*pending funding availability)**
 - 5-YR affordability period (must remain in the home for 5 years)
- ✓ Take eligibility test here: <http://www.nelcdc.org/king-s-dominion.html>

Income Eligibility Limits

CDBG/HOME

80% Median (Low)

In Family / Income Limit

1	\$34,850
2	\$39,800
3	\$44,800
4	\$49,750
5	\$53,750
6	\$57,750
7	\$61,700
8	\$65,700

Contact Monique Coleman at mc_nelcdc@outlook.com

for an application!

Applications available July 15

(806) 747-1505

HUD-Approved HCA# 83903